



8152 SouthPark Lane
Littleton, Colorado 80120-4519

www.fastraxind.com PH:303-979-7339 Fax:303-979-7350

MOVEABLE POINT FROG HEATING SYSTEM

THE FASTRAX[®] SYSTEM
WE GUARANTEE RESULTS



PATENT PROTECTED



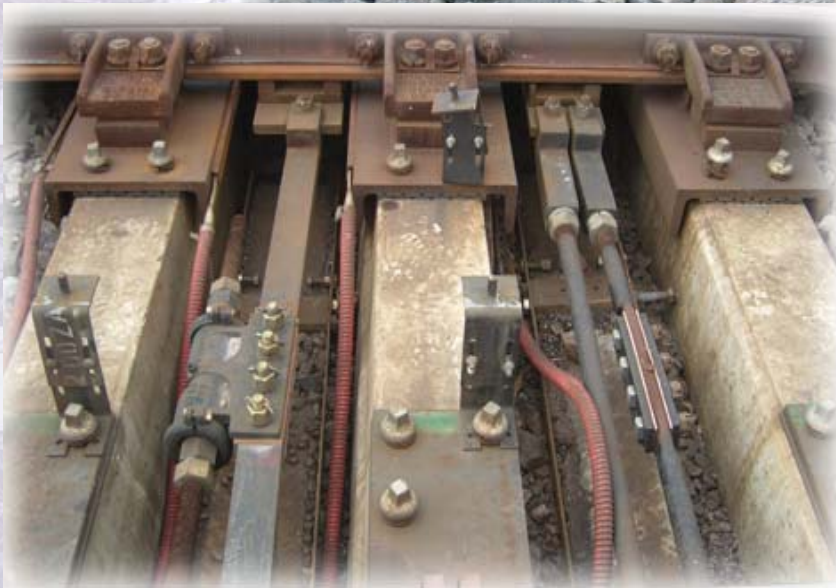
Plate Heaters



Wing Rail Heaters

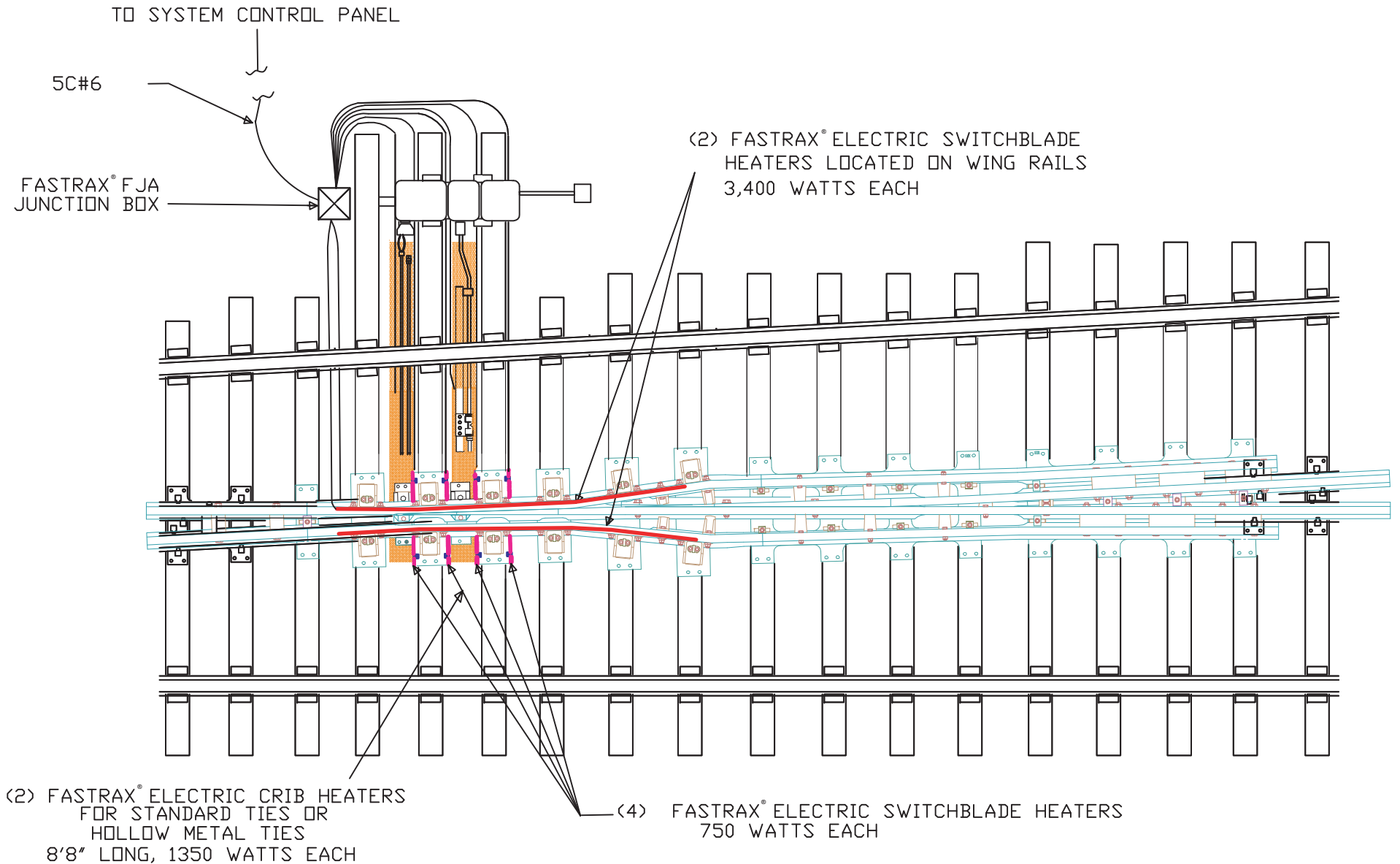
This system is the result of several years of testing and development. We are confident that you will not find a more efficient and reliable system anywhere. Give us your most challenging location and we will prove it!

FASTRAX[®] MOVEABLE POINT FROG HEATING SYSTEM



8152 SouthPark Lane
Littleton, Colorado 80120-4519
PH: 303-979-7339 Fax: 303-979-7350
www.fastraxind.com

**TYPICAL MOVEABLE POINT FROG LAYOUT - EQUIPMENT DETAIL
NO. 20 / 24 STANDARD SIZE - ALL TIE STYLES**



— 11 —

TYPICAL LAYOUTS ARE NOT TO SCALE AND ARE TO BE USED FOR GENERAL POSITION OF EQUIPMENT ONLY.
REVIEW YOUR COMPANY STANDARD FOR EXACT EQUIPMENT LAYOUT.



SPRING FROG HEATING AND AUTOMATIC CONTROL SWITCHBLADE[®] HEATER

Low profile heater puts the heat where it's needed most

SINGLE END DESIGN for easier installation & track maintenance

Full stainless steel construction for rust & corrosion resistance

Patented **XTC SPRING CLAMPS** (INCLUDED with Retro-fit SWITCHBLADE[®] heater)

(As shown below)

allows for expansion & contraction

**AVAILABLE ONLY FROM
FASTRAX[®]**



FACTORY PROVIDED
BODY CHANNEL



RETRO-FIT
SPRING FROG

EXCLUSIVE FASTRAX[®] element termination provides long life

Premium grade marine cable for resistance to UV, chemicals, & severe weather

26 ft lead standard

Any voltage, wattage, or length available

Fastrax[®] flat profile Heaters and Spring Clamps are protected under US patents 5,824,997 and 6,104,010. Canadian patent No. 2,234,149



8152 SouthPark Lane
Littleton, Colorado 80120
PH: (303) 979-7339 FAX: (303) 979-7350
www.fastraxind.com

**RUGGED, DURABLE
EASY TO INSTALL**

**Designed for use with Fastrax[®]
Energy Efficient Control Panels**



SPRING FROG HEATING AUTOMATIC CONTROL SYSTEMS



- Internal panel heater
- Adjustable automatic operation time
- Ground fault protection
- Extended life contactors
- Convenient localized wiring connections.
- Clear field wiring identification
- Automatic snow sensing
- Standard / Long life components
- Heavy-duty stainless steel hasp accepts standard railroad padlocks
- Tamperproof, safe "dead front" design
- Full stainless steel 14 gauge construction

Spring Frog Heater for Retro-Fit Spring Frog

1	GSFC1-2110100	Fastrax Stand Alone Spring Frog Panel: Controls heater for 1 No 9, 10 or 11 Spring Frog. 10 KW maximum capacity, 100 Ampere, 240 volt, 1-phase disconnect. Enclosure size: 24"H X 24"W x 10"D.
1	FSBR32408	Fastrax Single End SWITCHBLADE Spring Frog Heater Retro-Fit Frog: Heater for No. 9, 10, or 11 switch. 2,200 watts total, 240 volts, 300 Watts per foot of active heater length. 8 foot overall length. Includes clamps and mounting hardware.
1	FSBR32412	Fastrax Single End SWITCHBLADE Spring Frog Heater Retro-Fit Frog: Heater for No. 14, 15, or 16 switch. 3,400 watts total, 240 volts, 300 Watts per foot of active heater length. 12 foot overall length. Includes clamps and mounting hardware.
1	FSBR32416	Fastrax Single End SWITCHBLADE Spring Frog Heater Retro-Fit Frog: Heater for No. 20 or 24 switch. 4,600 watts total, 240 volts, 300 Watts per foot of active heater length. 16 foot overall length. Includes clamps and mounting hardware.

Spring Frog Heater for Factory Provided Body Channel

1	GSFC1-2110100	Fastrax Stand Alone Spring Frog Panel: Controls heater for 1 No 9, 10 or 11 Spring Frog. 10 KW maximum capacity, 100 Ampere, 240 volt, 1-phase disconnect. Enclosure size: 24"H X 24"W x 10"D.
1	FSBS32408	Fastrax Single End SWITCHBLADE Spring Frog Heater: Channel Provided Frog for No. 9, 10, or 11 switch. 2,200 watts total, 240 volts, 300 Watts per foot of active heater length. 8 foot overall length.
1	FSBS32412	Fastrax Single End SWITCHBLADE Spring Frog Heater: Channel Provided Frog for No. 14, 15, or 16 switch. 3,400 watts total, 240 volts, 300 Watts per foot of active heater length. 12 foot overall length.
1	FSBS32416	Fastrax Single End SWITCHBLADE Spring Frog Heater: Channel Provided Frog for No. 20 or 24 switch. 4,600 watts total, 240 volts, 300 Watts per foot of active heater length. 16 foot overall length.



8152 SouthPark Lane
 Littleton, Colorado 80120
 PH: (303) 979-7339 FAX: (303) 979-7350
 www.fastraxind.com

**RUGGED, DURABLE
 EASY TO INSTALL**

*Designed for use with Fastrax®
 Energy Efficient Control Panels*

FOR LONGER HEATER LIFE WE INCLUDE OUR EXCLUSIVE XTC-0173 PATENTED SPRING-CLAMPS
WITH EVERY SWITCHBLADE HEATER



300 WATTS PER FOOT

SWITCHBLADE[®] RAIL HEATER SELECTION GUIDE

Overall Length	Heated Length	Total Wattage	240 VAC Model No.	480 VAC Model No.	600 Volt Model No.	XTC-0173 Clamp
12 ft	11 ft 2 in	3,400	FSB32412	FSB34812	FSB36012	6
14 ft	13 ft 2 in	4,000	FSB32414	FSB34814	FSB36014	7
16 ft	15 ft 2 in	4,600	FSB32416	FSB34816	FSB36016	8
18 ft	17 ft 2 in	5,200	FSB32418	FSB34818	FSB36018	9
20 ft	19 ft 2 in	5,800	FSB32420	FSB34820	FSB36020	10
22 ft	21 ft 2 in	6,400	FSB32422	FSB34822	FSB36022	11
24 ft	23 ft 2 in	7,000	FSB32424	FSB34824	FSB36024	12
26 ft	25 ft 2 in	7,600	FSB32426	FSB34826	FSB36026	13

Items in red are factory stock standard length units

SWITCHBLADE[®] SPRING FROG SELECTION GUIDE

FROGS WITH FACTORY PROVIDED BODY CHANNEL FOR FASTRAX[®] HEATERS

Overall Length	Heated Length	Total Wattage	240 VAC Model No.	480 VAC Model No.	600 Volt Model No.	XTC-0173 Clamp
10 ft	9 ft 2 in	2,800	FSBS32410	FSBS34810	FSBS36010	1
12 ft	11 ft 2 in	3,400	FSBS32412	FSBS34812	FSBS36012	1
16 ft	15 ft 2 in	4,600	FSBS32416	FSBS34816	FSBS36016	1
20 ft	19 ft 2 in	5,800	FSBS32420	FSBS34820	FSBS36020	1

Heater to be applied in toe end pre-cast body channel provided

RETROFIT OF EXISTING FROGS WITH FASTRAX[®] HEATERS

10 ft	9 ft 2 in	2,800	FSBR32410	FSBR34810	FSBR36010	5
16 ft	15 ft 2 in	4,600	FSBR32416	FSBR34816	FSBR36016	8

Heater to be applied to D-Bar flat area below horn bolts
Clamp kits include integral spacers for D-Bar and self tapping bolts

All heaters have 26 foot, 2 conductor, No 10 gauge marine grade connection conductor with FASTRAX[®] exclusive wiring termination

**SWITCHBLADE[®] Heaters Available in Any Voltage up to 600 Volt AC
With Continuous Lengths up to 40 Feet**

Protected under US patents 5,824,997 and 6,104,010. Canadian patent No. 2,234,149

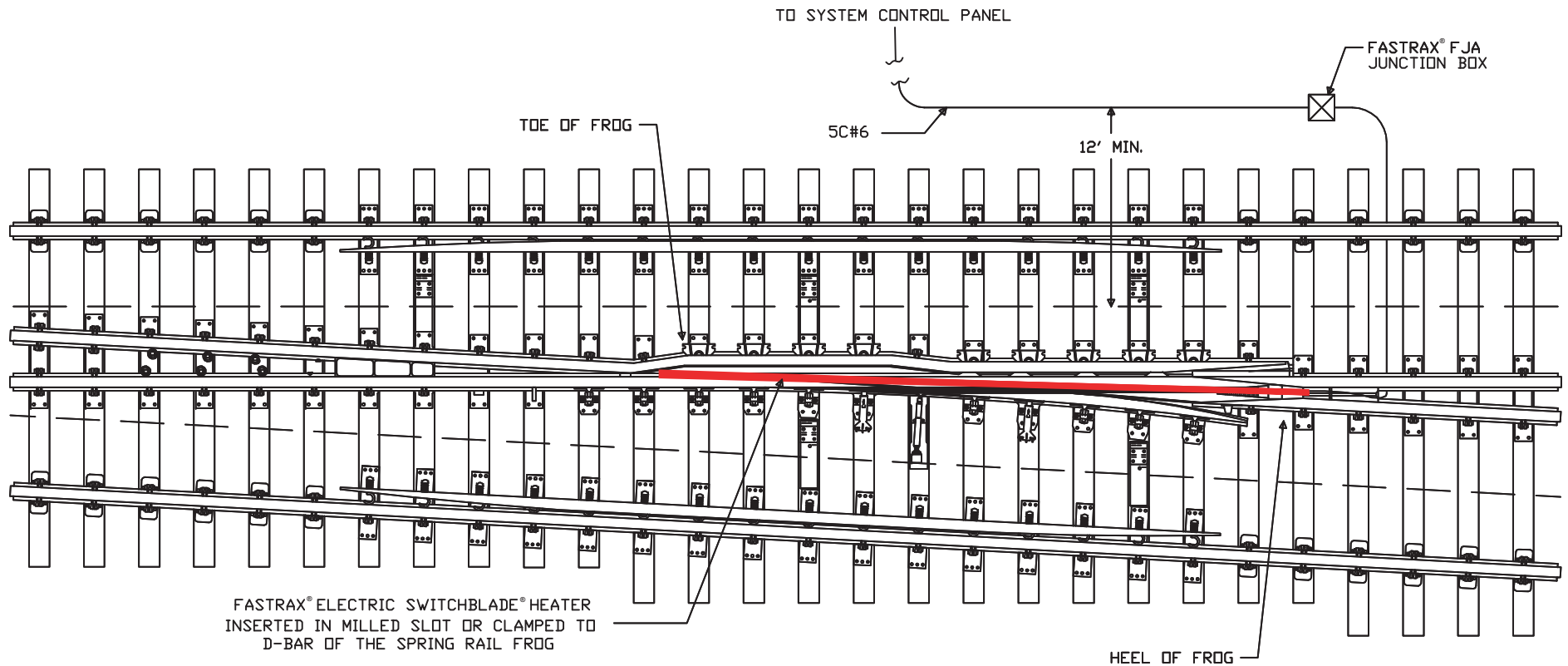


8152 SouthPark Lane Littleton, Colorado 80120 PH: 303-979-7339 FAX: 303-979-7350

All Values Nominal

TYPICAL SPRING FROG LAYOUT - EQUIPMENT DETAIL
ALL STANDARD SIZES - ALL TIE STYLES

— 14 —



TYPICAL LAYOUTS ARE NOT TO SCALE AND ARE TO BE USED FOR GENERAL POSITION OF EQUIPMENT ONLY.

REVIEW YOUR COMPANY STANDARD FOR EXACT EQUIPMENT LAYOUT.