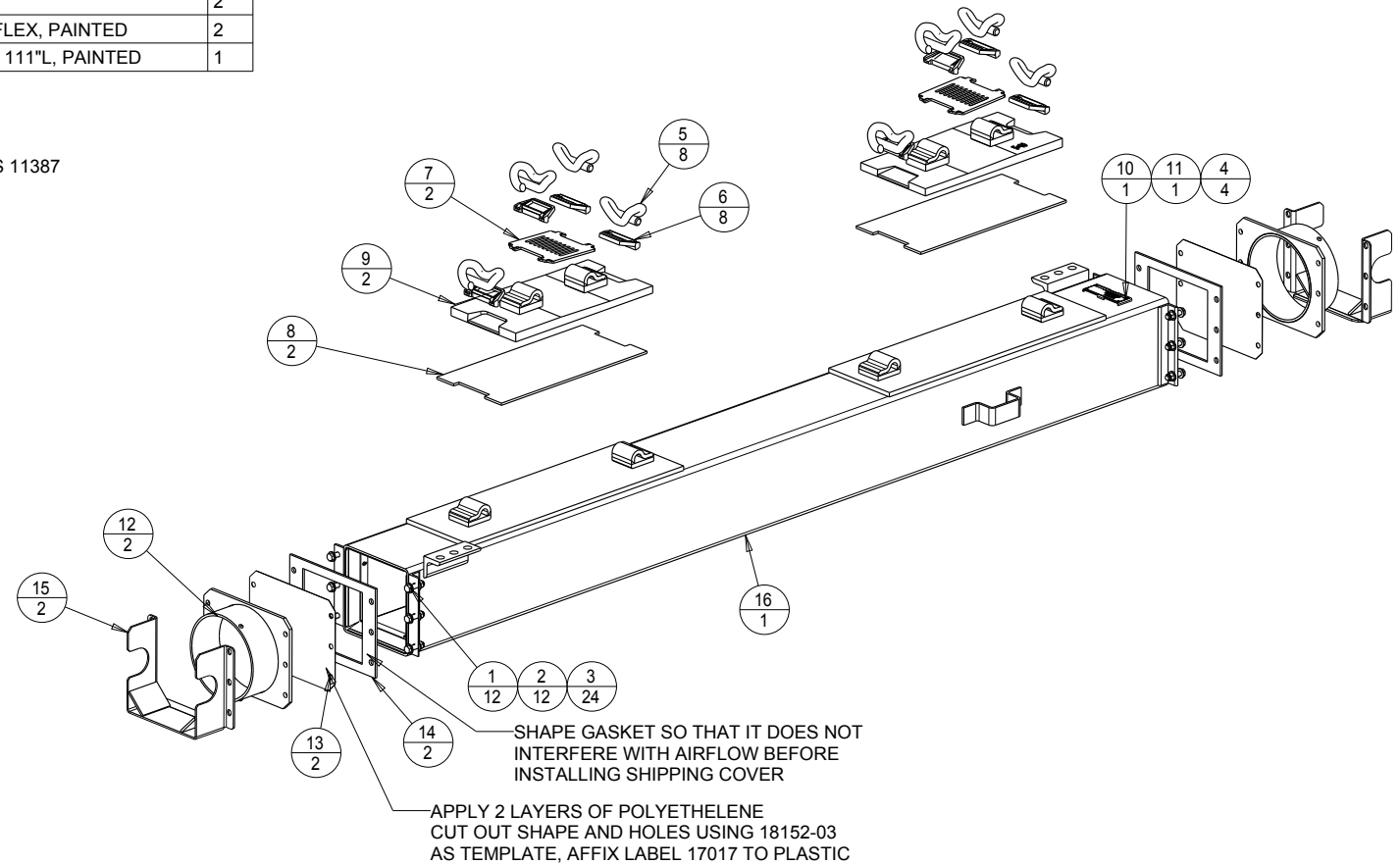


INDEX	PART#	DESCRIPTION	QTY
1	9000-0048	SCR HHC 1/2-13*2.0L GR 5 STL ZN PLD"	12
2	9001-1006	NUT 1/2-13 NYLOK HEX STL ZN PLD	12
3	9002-0001	WSHR 1/2" FLAT SAE STL ZN PLD	24
4	9004-0032	RIVET .125" .03-.12" POP SST DOME HD	4
5	9070-1007	SPRING CLIP, PANDROL	8
6	9070-1008	SPRING CLIP INSULATOR, PANDROL	8
7	14787-02	RAIL PAD, INSUL PANDROL 5.5" BASERAIL	2
8	14847-02	INSULATOR, TIEPLATE, 10P NO HOLES	2
9	15791	TIEPLATE ASSY 10P 5.5"BASE 1:40 CANT	2
10	16258	TAG, MODEL ID, PRE-SERIALIZE	1
11	16259	LABEL, MODEL ID for SERIAL TAGS	1
12	18152-01	ADPTR/ENDPLATE, TIE > 10" FLEX, PAINTED	2
13	18152-POLYETHYLENE	ENDPLATE, POLYETHELENE	2
14	18156	GSKT, TIEDUCT END PLATE	2
15	18157	GUARD, ADPTR/ENDPLATE, TIE > 10" FLEX, PAINTED	2
16	18196	DUCT, TIE 10P ASSY EXT W/O PLATES 111"L, PAINTED	1

TITLE	DRAWING NUMBER	REV.
TIEDUCT ASY, 10 X 10 PANDROL NO HOLES, 5.5 BASE RAIL	18198	F SHT. 1/4

**PANDROL FASTENERS**  
**5.5" BASE RAIL**  
**1:40 CANT**  
**18198-01**

NOTE:  
1. APPLY ANTI-SEIZE 9014-0042 TO ALL 3/8-16 BOLTS  
2. PACKAGE 2 RAIL PADS, 4 CLIPS, 4 CLIP INSULATORS AND TIEDUCT INSTALLATION INSTRUCTIONS 11387 UNDER SHIPPING COVER, 15820-02.



SHAPE GASKET SO THAT IT DOES NOT INTERFERE WITH AIRFLOW BEFORE INSTALLING SHIPPING COVER

APPLY 2 LAYERS OF POLYETHELENE CUT OUT SHAPE AND HOLES USING 18152-03 AS TEMPLATE, AFFIX LABEL 17017 TO PLASTIC

SCALE 0.050

MATERIAL	AS SHOWN	SCALE	AS SHOWN	UNLESS OTHERWISE SPECIFIED DIMENSIONS ARE IN INCHES	XX ± 0.03 XXX ± 0.01	ANGLES ± 0.5 ° OTHER _____	CCI THERMAL TECHNOLOGIES INC.	DWG SIZE	F	PICTORIALLY UPDATED TO SHOW NEW LOCATION OF TAG PLATE 16277. NON EGN	03DEC2010	GTM
							DWN SFL	DATE DWN 04JUNE2002	CHKD	DATE		CHKD
								A1	REV	DESCRIPTION	DATE	