

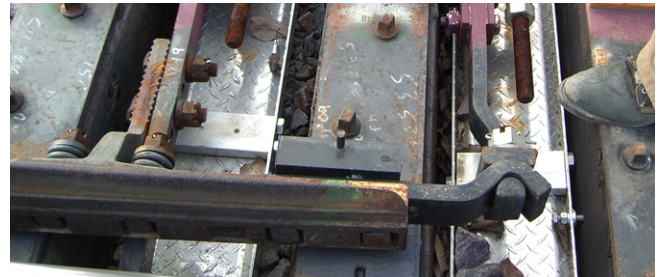
Crib Heaters

Crib heaters eliminate ice and snow in the crib area at the critical switch point allowing for easy maintenance of switch rods and smoother switch operation. Exclusive jack bolt technology ensures secure fit, eliminating movement and potential switch fouling.



Features

- Utilizes the patented, energy saving SwitchBlade® heater
- Over 30% more efficient than traditional round element heaters
- Heavy gauge aluminum construction resists corrosion and offers protection and durability in rugged railroad environments
- 26 ft premium grade marine power cable lead is resistant to chemicals and severe weather
- Model lengths range from 4' to 8'8"
- Standard wattages range from 600 W to 1350 W
- 100 W/ft and 200 W/ft also available
- Available in AC or DC voltages, from 120V to 750V



Benefits

- Compatible with all ties including standard, hollow metal, cement and composite
- Low profile
- Will not interfere with standard or in-tie switch operations
- Jack bolt clamps are designed for easy removal and reinstallation
- Custom lengths and wattages available



Table 7 – Crib Heater Selection Guide

Overall Length (ft)	Overall Width (in)	Thickness (in)	Total Wattage	Watts/Foot	240V AC Model No.	480V AC Model No.	600V AC Model No.
4'	8	2	600	150	FBH152404	FBH154804	FBH156004
5'			750	150	FBH152405	FBH154805	FBH156005
7'			1,350	200	FBH22407	FBH24807	FBH26007
8' 8"			1,350	150	FBH152409	FBH154809	FBH156009

Note: Custom lengths and wattages available.

Model Coding

F	CH	15	24	07	DC
Model Series	Application Type	Watts/ft	Voltage	Overall Heater Length (ft)	Voltage Type
F – Fastrax™	CH – Crib Heater	10 – 100	12 – 120V	03 - 3	AC, DC
		15 – 150	24 – 240V	05 - 5	
		2 – 200	48 – 480V	07 - 7	
			60 – 600V	09 - 8.8	
			75 – 750V		